

# MONTHLY MEMBERSHIP PROGRESS REPORT

LOCATION NOVA SCOTIA

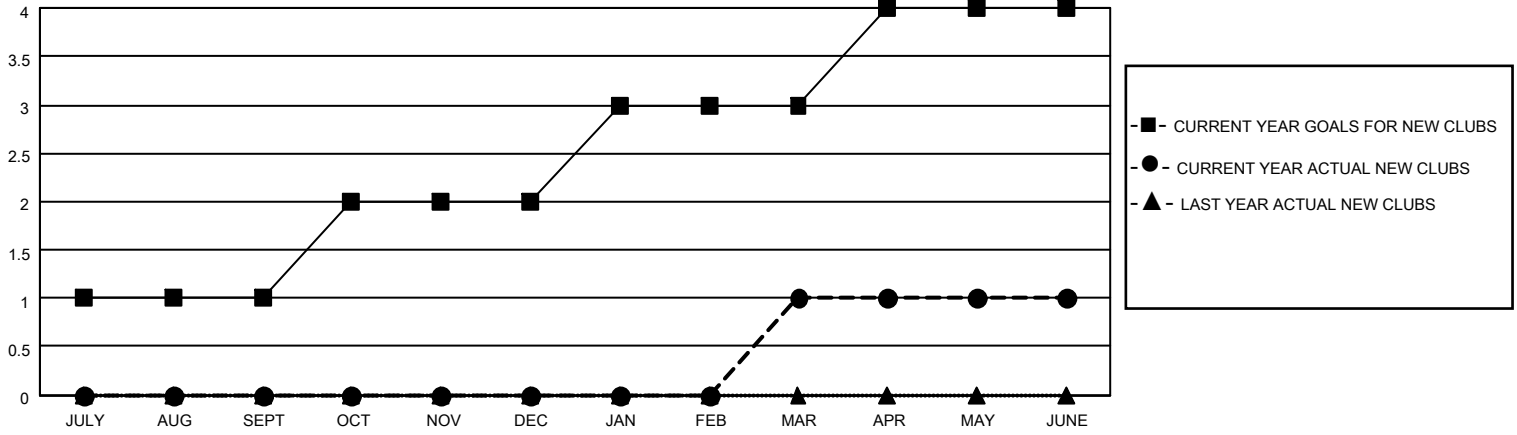
District N 2

Results as of: 6/30/2022

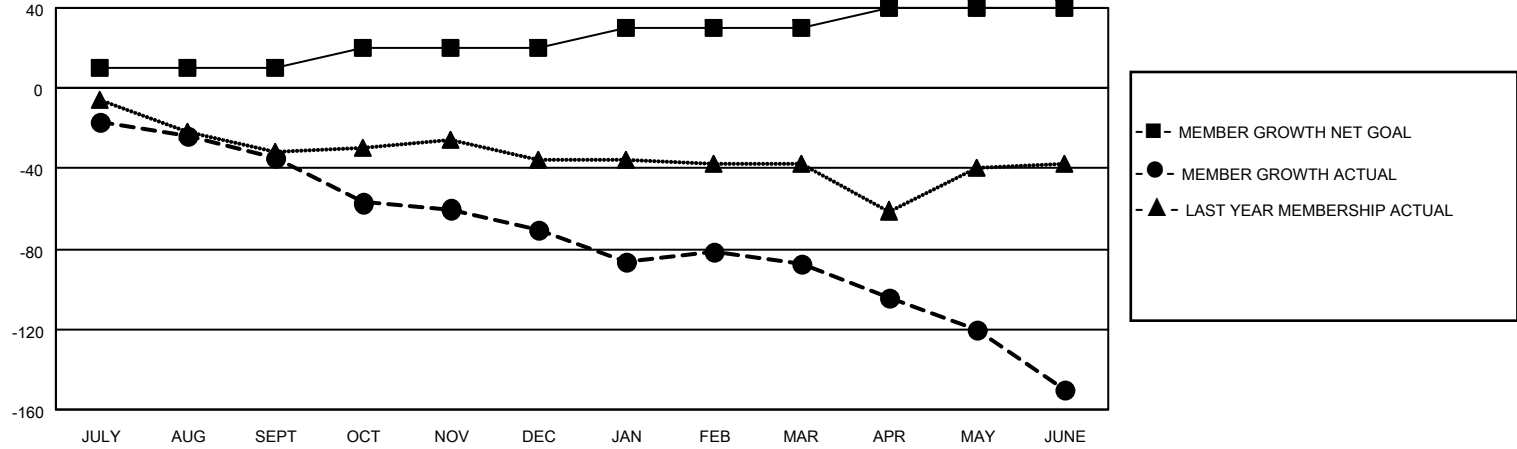
Clubs			
RESULTS FOR 2021-2022			
QUARTER	NEW CLUB GOAL	NEW CLUBS	DROPPED CLUBS
JULY/AUG/SEPT	1	0	0
OCT/NOV/DEC	1	0	1
JAN/FEB/MAR	1	1	0
APR/MAY/JUNE	1	0	0

Members			
RESULTS FOR 2021-2022			
QUARTER	MEMBER GROWTH NET GOAL	MEMBER GROWTH ACTUAL	DROPPED MEMBERS ACTUAL (including transfers)
JULY/AUG/SEPT	10	30	60
OCT/NOV/DEC	10	46	71
JAN/FEB/MAR	10	59	71
APR/MAY/JUNE	10	31	86

**GOALS AND ACTUAL NEW CLUBS CUMULATIVE**



**GOALS AND ACTUAL MEMBERS CUMULATIVE**



DROPPED CLUBS: 1	
<u>DROPPED MEMBERS</u>	
DECEASED	47
CLUB CANCELLED	0
OTHER	241
<b>TOTAL</b>	<b>288</b>

41 CLUBS OF 70 ADDED 1 OR MORE NEW MEMBERS

[CLICK HERE FOR CUMULATIVE MEMBERSHIP DATA](#)

<u>GENDER DISTRIBUTION</u>	
MALE	997 (62.39%)
FEMALE	600 (37.55%)
NON BINARY	1 (0.06%)
PREFER NOT TO ANSWER	0 (0.00%)
<b>TOTAL FAMILY UNIT MEMBERS</b>	<b>296</b>
<b>FAMILY MEMBERS PAYING HALF DUES</b>	<b>152</b>